

Magex produces
with quality system
certified by



A unit/machine designed to celebrate the 150th anniversary of the union, a real auto shop. Thanks to its 14 lanes per floor with a total of 2240 products in 112 different types, 224 in the ProVision Dual version, hosting up to 4480 products.

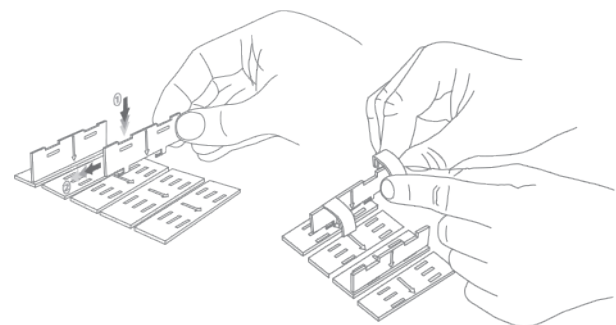
Possibility to refrigerate.

MAGEX LOADING SYSTEM[®]

Maximum adaptability to distribute any type of product, you can pair more than one lane in an automatic way to distribute products that are wider. The system also allows the insertion of interlocking partitions to separate products that are next to one another from the next.

The system has a self-diagnosis system that checks the operating status of the lane before any disbursement of the product.

Patented VI2006A000275, VI2009A000079
VI2010A000343, VI2011A000026



Patent Pending WO2010/116395A1
US 2012/0104018A1
10717310.6

SERVICE DATA IN REAL TIME

Magex is able to provide all its customers a service for the management of vending machines in real time connected via Web technology, accessible from any system connected to the network. This allows you to view real-time data of each sale, the status of the stock, the coins / banknotes inserted or rendered, automatic rebooting in case unplanned changes in the operation system, for example intrusion attempts. It also monitors the temperature and the evaporation inside the distributor with a relative visualization of the details.

ProVision

Master

Slave

Console



Width	1520 mm	1300 mm	300 mm
Depth	885 mm	885 mm	884 mm
Height	1995 mm	1995 mm	1995 mm
Weight (with 7 floors)	600 Kg	450 Kg	200 Kg
Maximum number of floors	8	8	-
Selection supply of floors Min-Max	2 to 14	2 to 14	-
Voltage supply	High luminosity LEDs (20W)	High luminosity LEDs (20 W)	-
Power consumption	100-240 V 50/60 Hz	100-240 V 50/60 Hz	100-240 V 50/60 Hz
Power consumption by cooling unit	420 W	420 W	75 W
Climate class refrigeration unit	5	5	-
Temperature control and cooling system	Electronic with alarm in real time	Electronic with alarm in real time	-
Internal temperature	2°C	2°C	-
Operating temperature of cooling unit	up to 40°C	up to 40°C	-
Payment system compatibility	MDB/CCTALK	-	-

TECHNICAL SPECIFICATIONS

- Distributor armored with double opening locks independent from the money holding area to the insertion of the money.
- The products displayed in the distributor are illuminated by a high-efficiency LEDs.
- An elevator transports the selected product in the compartment for easy access.
- Restocking of products in the vending are facilitated by the extraction from the front or inside of the complete floors of the store via the sliding rails.
- Modular system, can be expanded at any time with additional slave machines.
- Through an advanced Data Management, you have control over every single sale in real time via GPRS/3G technology.

OPTIONALS

- Bill reader
- Bill validator with change
- Coins reader with change multihopper
- Outdoor cover
- Lexan® protective
- LCD price display
- Lift
- Fridge
- System for managing variable weight
- Rear door for interior loading
- Inserting items via barcode
- Camera Kit
- Age verification
- Custom and personalized graphics
- GSM data management
- System RFID fidelity card
- Credit card and banknote reader

COLOURS

